



# Y6 Knowledge Organiser

## Painting

### Artist



### Georgia O'Keeffe

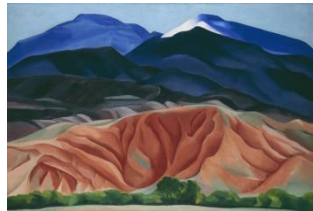
**Born:** Wisconsin, USA  
1897-1986

Created simple paintings of nature and landscapes using bold lines and bright colours.

### Significant art work of Georgia O'Keeffe



Jimson Weed  
(1936)



Black Mesa Landscape  
(1930)



Cows skull:  
Red,  
White  
and  
Blue  
(1889))

### Other Artists

Matthew F Fisher 1976  
Anna Valdez 1985  
Camilla Engstrom 1989

| Vocabulary          |  |
|---------------------|--|
| <b>Abstract art</b> | Modern art that uses colour, line and shape and inspired by a real subject matter.   |
| <b>Composition</b>  | The placement or arrangement of visual elements.   |
| <b>Precisionism</b> | A smooth, sharply defined painting style   |
| <b>Modernism</b>    | A cultural movement of the late 19 <sup>th</sup> century to mid-20 <sup>th</sup> century. – Artists used their own style, colours and shading for effect, rather than an exact copy. |
| <b>Landscape</b>    | a picture representing an area of land   |
| <b>Mood</b>         | The atmosphere in a painting or feeling expressed  |
| <b>Vibrant</b>      | Full of energy, colour and life.   |
| <b>Tone</b>         | Areas of dark and light on a painting  |
| <b>Form</b>         | Helps artists to produce an illusion of 3D and depth on a two dimensional surface  |

### How do I create ae like O'Keef?

**Step 2:** Select which colour oil pastels you will use for each 'layer' of the mountains.

**Step 3:** Draw bold lines down the mountains in jagged lines (this creates the look of the ridges). Press firmly on the paper.

**Step 4:** Around the ridge lines, colour pressing hard to show shading. In the areas around this, colour with a firmer grip, to show slightly lighter shading around the ridges.

**A child's O'Keeffe-style landscape drawing.**

**Step 1:** Using pencil, draw the outline of the mountains and hills. Some go at the front, whilst some are further behind in the background.

**Step 5:** Now, more lightly colour in the remaining white spaces, to complete your O'Keeffe style landscape!

**Things you'll need:**  
Drawing paper, oil pastels, pencil.