

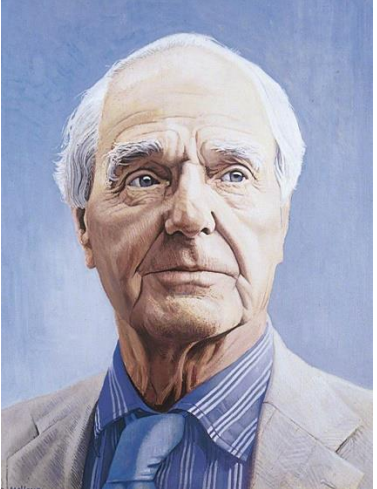


Y2 Knowledge Organiser

Henry Moore - Wax Resist

Artist

Henry Moore



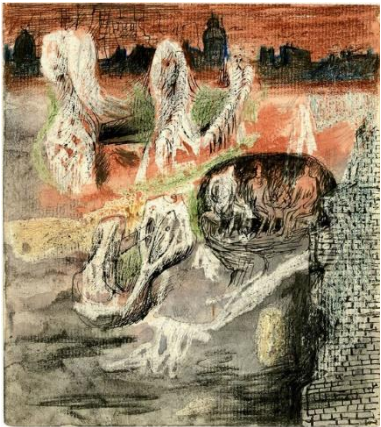
30 th July 1898, England -
31st August 1986, England

Vocabulary	
Resist	An art technique that uses several layers to uncover a design.
Wax resist	Use of wax to create a design that has colour wash applied over the top.
Wash	Laying down colour on a broad area of paper
Watercolour	Paint mixed with water to create translucent layers of colour.
Technique	Skill or way of doing

What I will know by the end of this unit.

- Henry Moore is a famous British artist who create sculptures and wax resist.
- Henry Moore was inspired by nature and war.
- Wax is water resistant so the paint will not go on top on the wax
- To use watercolour paints you must mix the paint with water.
- The Wax Resist technique is where you lay down some wax on your paper and paint over the wax.
- The more water you use the light the paint will be, the less water you use the darker the colour will be.

Henry Moore artwork



Wax resist artwork

