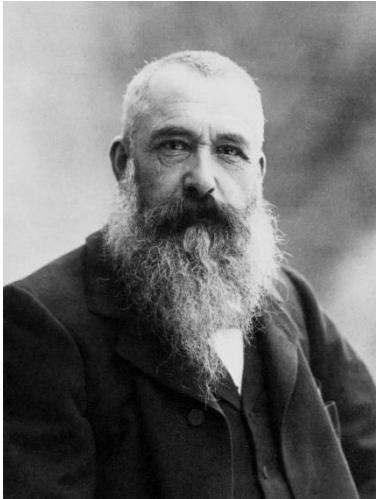




Y2 Knowledge Organiser

Painting – Monet

Artist



Claude Monet

Born: 1840 – 1926

A French painter known for using watercolours to paint landscapes and natural things.

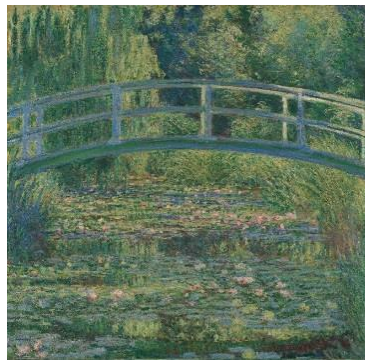
Vocabulary

Tint	Adding white to a colour to make it lighter
shades	Adding black to a colour to make it darker
Wash	A painting technique in which a paintbrush is loaded with watery paint and passed loosely over a surface to make a continuous transparent area with little evidence of brushwork.
Hue	Another word for colour..
Impressionism	A style of painting using short, quick brushstrokes and unblended colours. Artists paint their idea or feeling about something.

What I will know by the end of this unit

- Claude Monet was a famous French impressionist artist
- Monet used water colours to paint landscapes and natural things.
- How to create tints and shades
- How to use watercolour painting techniques
- How to create a wash .
- Be able to create a water colour painting of a landscape or natural things.
- To reflect on their artistic skills and identify any ways of improvement.

Monet's Art work



The Water Lily Pond



Venice Twilight



The Water Lilly Pond