



Y5 Knowledge Organiser

Sculpture – Henri Rousseau

Artist



Henri Rousseau

Born: 1844 – 1910

A French artist, whose art work portrays jungle scenes.

In 1897 Rousseau produced one of his most famous paintings, *La Bohémienne endormie* (The Sleeping Gypsy).

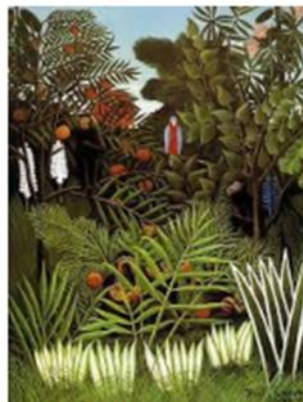
Vocabulary

slab	A technique used in pottery, where clay is rolled in to thin sheets to make different shapes.
Indenting	Creating deep valleys or grooves
Malleable	Can be shaped or formed by hand or with tools.
glaze	A thin transparent layer, which modifies the appearance of the underlying paint.
Carving	A technique that involves cutting or scraping away.

What I will know by the end of this unit

- Henri Rousseau was a French artist
- Henri Rousseau's paintings represented jungle scenes.
- How to produce intricate patterns and textures using clay slabs.
- How to mix and match colours to create atmosphere and light effects. Mix colour shades and tones with confidence, building on previous knowledge.
- Understand different ways of finishing work e.g. glaze, paint, polish etc.
- To create own work of art inspired by Henri Rousseau using clay.
- To reflect on their artistic skills and identify any ways of improvement.

Rousseau's work



Exotic Landscape



Tiger in a Tropical Storm



The Snake Charmer