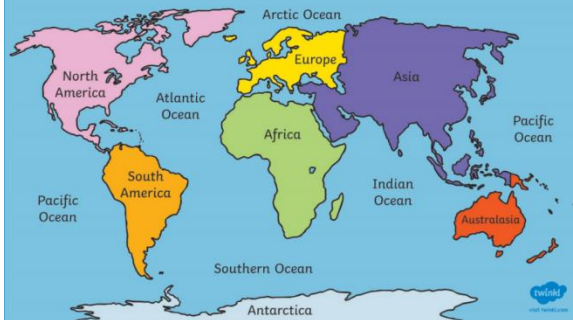


Knowledge Organiser Year 2– Down on the farm.

What should I already know?

- I know what animals live on a farm.
- I know the names of farm animal's babies.
- I live in Huyton in Liverpool.
- Liverpool is a city.
- My continent is Europe.

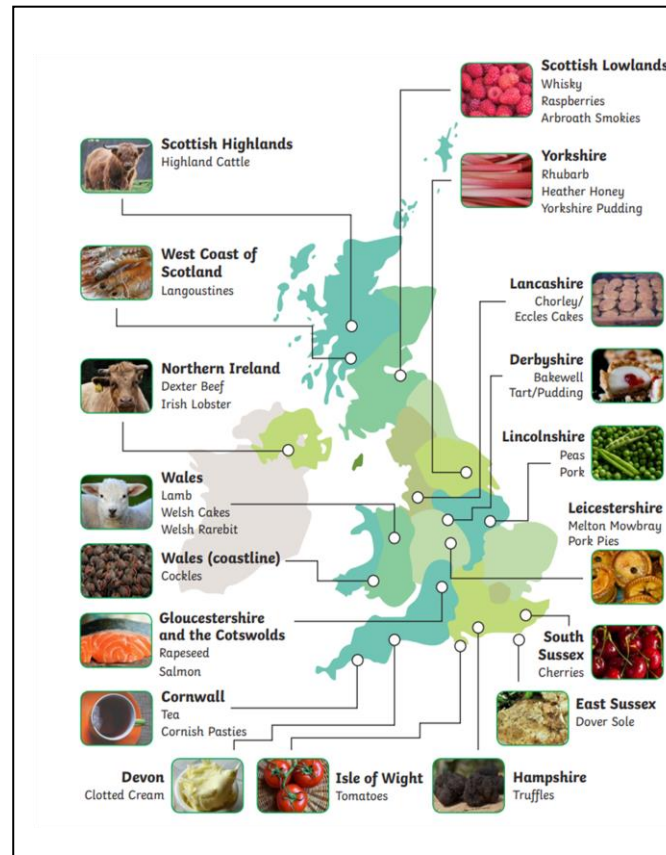
Continents and Oceans



Geographical Skills and Fieldwork

- Use Google Earth to find farm land close to Liverpool . Which other things do you see? Do you notice anything different?
- Describe the human and physical features of farmland.
- Explain why farming is important to us all.

What will I know by the end of this unit?



Useful links

<https://www.foodmiles.com/more.cfm>

<https://youtu.be/Jpt0ERj77hc?list=PLSXnX8IDffhQvzy4KNrTn7jOlnGB1rHt6>

Vocabulary

farm	An area of land used to produce crops or to breed animals and livestock.
soil	The upper layer of earth in which plants grow. Brown/black in colour.
vegetation	
countryside	The land and scenery of a rural area.
seasons	Each of the four divisions of the year (spring, summer, autumn, and winter) marked by particular weather patterns and daylight hours
reared	If you rear a young animal, you keep and look after it until it is old enough to be used for food.
arable	Land used or suitable for growing crops.
livestock	Farm animals regarded as valuable.
landscape	Everything you can see when you look across an area of land, including hills, rivers, buildings, trees, and plants.
climate	
produce	Generalised term for many farm-produced crops, including fruits and vegetables
harvest	The gathering of a crop.
export	To sell products to another country.
import	Goods or products brought in from another country in order to be sold.
food miles	A unit used to measure the distance that food travels- from where it is produced, to where it is eaten.
continent	A continent is a very large area of land, such as Europe, Africa or Asia, that consists of several countries.
biome	